

advena

The word 'advena' is written in a dark purple, lowercase, sans-serif font. The letter 'v' is replaced by two green leaf shapes pointing downwards. The letter 'e' is replaced by a single green leaf shape pointing downwards. The letter 'a' at the end is replaced by two large, overlapping green leaf shapes, one pointing upwards and one pointing downwards.

Life Sciences & Biotechnology

# General Information

---



- Distributor of laboratory equipment and reagents for Life Sciences & Biotechnology.
- Territory: Central Asia, Middle East
- Team with scientific background in molecular and cellular biology
- Focus on scientific partnership



# General Information

## Cell Biology

Spectral Flow Cytometry, Cell Sorting, Digital Imaging, Cell culture Media, FBS, Real-time Cytotoxicity, Immunotherapeutic assays, Cell culture plastic & reagents

## Protein Analysis & Biotechnology

FPLC, Resins, Gel-documentation, Upstream, Filtration solutions, TFF, Downstream, Microbiology Counters, Oligos, R&D platforms, SFM

## Molecular Biology

dPCR, qPCR, classic PCR, dNTPs, NA Purification Station & Kits, research PCR-tests, Ferments, Plastic & Reagents, Sanger sequencing, NGS library, Software

## Base Equipment

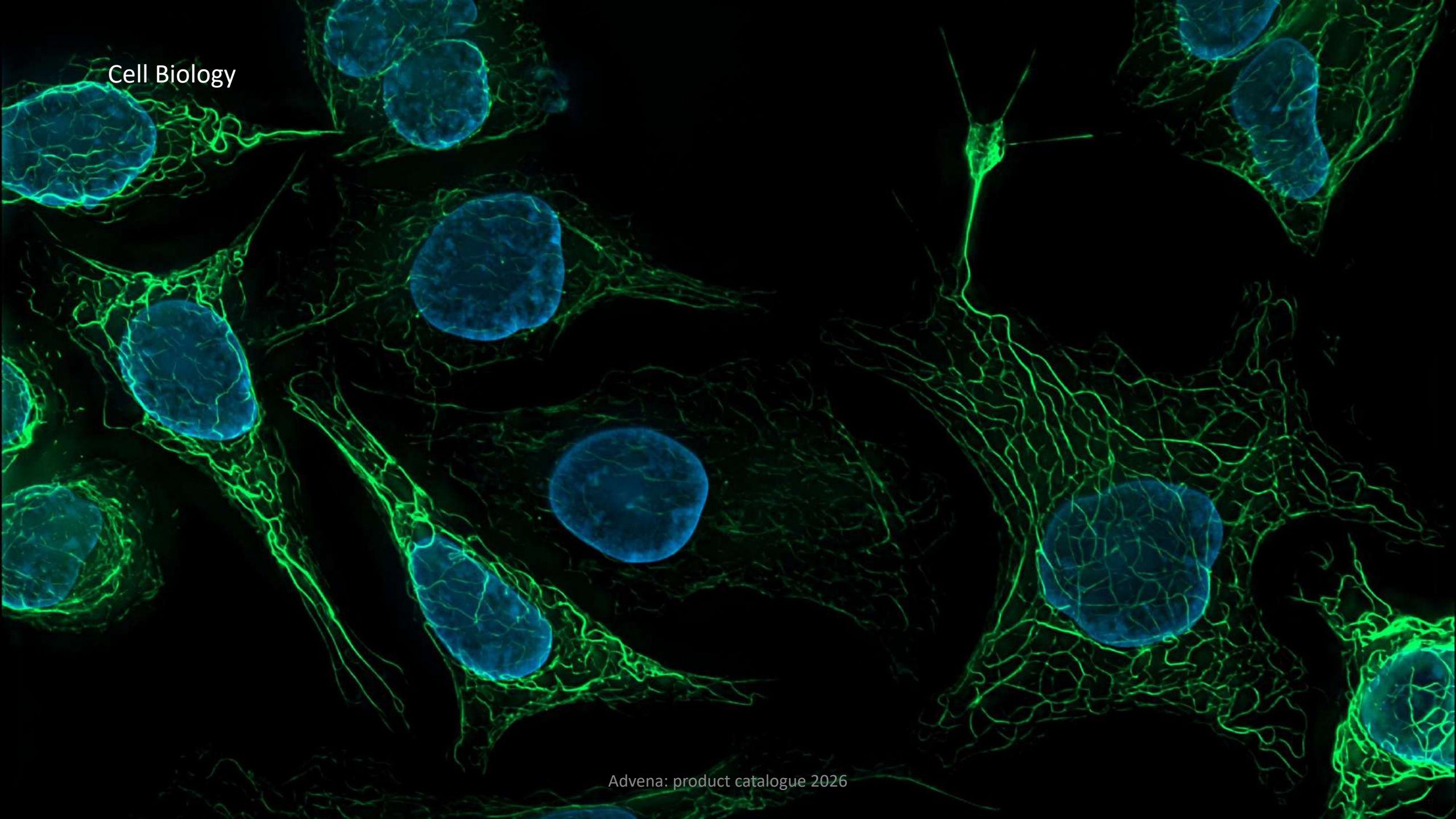
Centrifuges, Biosafety Cabinets, Cryo-storage, CO<sub>2</sub>-incubators, Shakers Freezers, Deep-Freezers, Spectrophotometers, Microplate readers

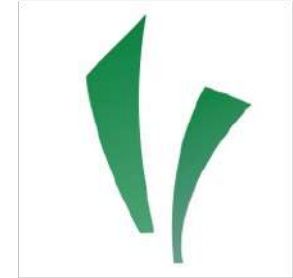


# Trusted partners



Cell Biology





## Better Counts for Better Science.



LUNA-III™  
Automated Cell Counter



LUNA-II™  
Automated Cell Counter



LUNA-FX7™  
Automated Cell Counter



LUNA-FL™  
Dual Fluorescence Cell Counter



LUNA-STEM™  
Automated Fluorescence Cell Counter



QUANTOM Tx™  
Microbial Cell Counter

BRIGHTFIELD CELL COUNTER

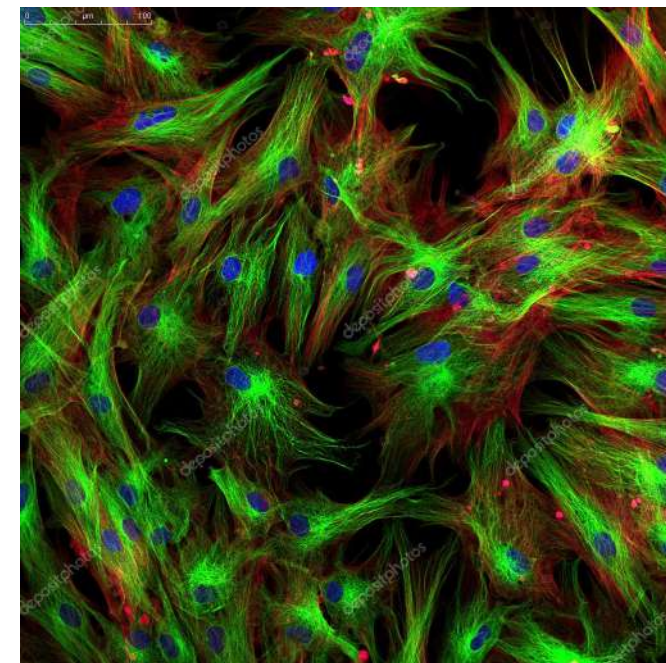
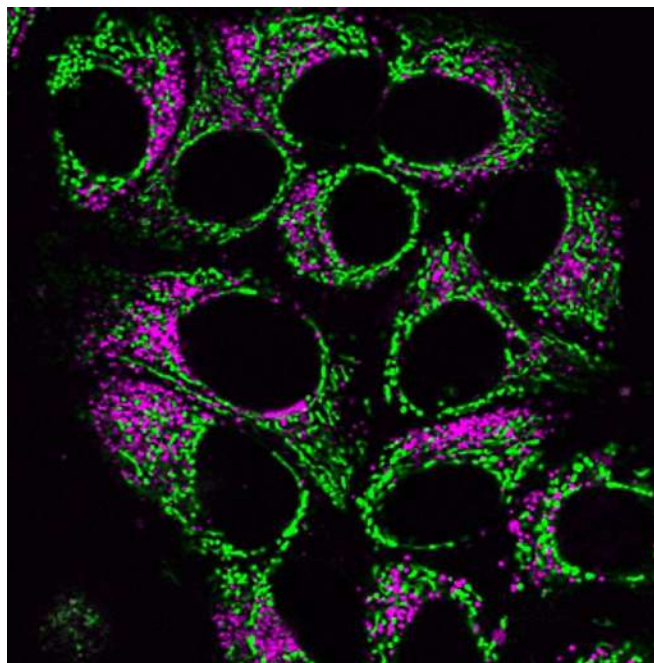
FLUORESCENCE CELL COUNTERS

MICROBIAL CELL COUNTERS



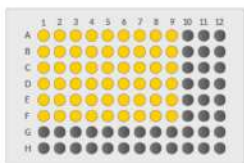
## CELENA® X High Content Imaging System

Automated high content image acquisition and analysis for drug discovery and cell biology



Create Your Own Imaging And Analysis Workflows With The CELENA® X

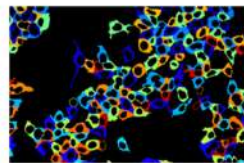
Versatile And Customizable For Your Cell Imaging Needs



Imaging



Image Analysis



Data Analysis



Vessel Holder Selection Guide



Objective Selection Guide



LED Filter Cube Selection Guide



Cell Analyzer



**ID7000™**

High-parameter spectral analyzer / flow cytometer can be configured with up to 7 lasers and 186 detectors.

Cell Sorters



**FP7000**

Spectral cell sorter delivers high throughput spectral sorting combined with versatile capabilities and guided software workflows to support high-parameter applications.



**MA900**

Multi-application cell sorter features ease of use, support for up to 12 fluorescence parameters, and 4-way sorting.



**SH800**

Cell sorter features automation for ease of operation, microfluidics sorting, and a benchtop fit to make it a good size for individual labs.



**CGX10**

GMP-ready, fully-closed, multiparametric, fluorescence-based cell sorter for cell and gene therapy manufacturing workflows.

Reagents and Consumables



Reagents and Consumables

>12,000 reagent choices for panel design in multicolor applications. Consumables to support operation of all platforms.



Flow Cytometry Reagents

Anti Human Antibodies  
Cell Surface Antigens  
Intracellular Antigens

Anti Rat Antibodies  
Cell Surface Antigens  
Intracellular Antigens

Anti Mouse Antibodies  
Cell Surface Antigens  
Intracellular Antigens

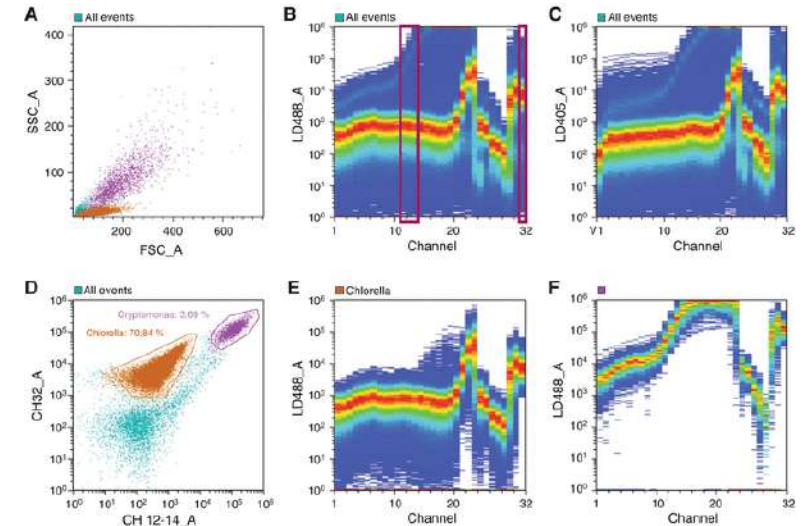
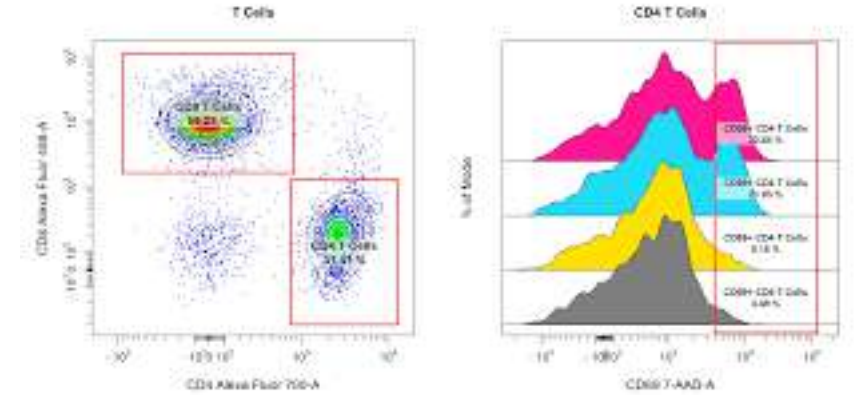
Annexin V  
Isotype Controls and Second  
Step Reagents

Anti Non-Human Primate  
Antibodies  
Cell Surface Antigens  
Intracellular Antigens

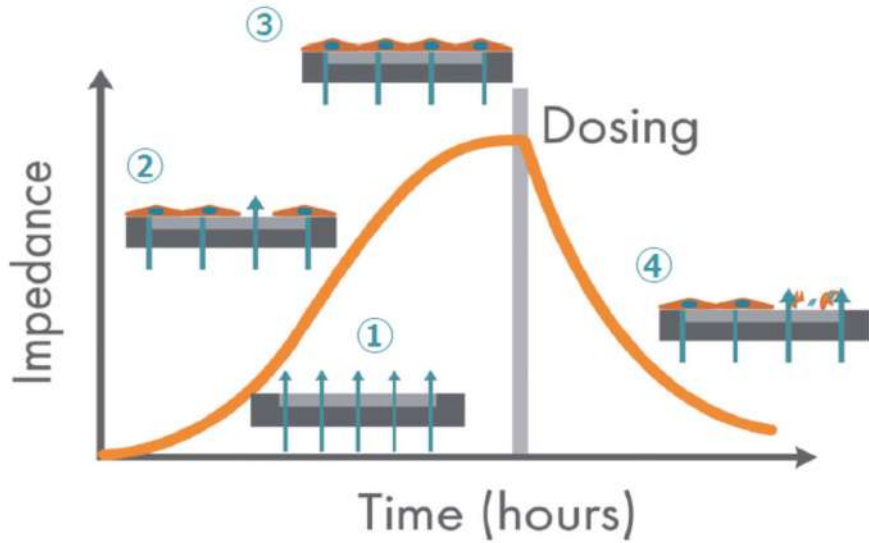
Kits and Cocktails  
Buffers  
KIRAVIA Dyes<sup>™</sup>



To further life science research in the regenerative medicine and immunology fields, Sony has released a portfolio of dyes conjugated to antibodies, giving researchers new choices for panel design. The conjugates can be used in a variety of multicolor applications.



Cell Biology  
Real-time Cell Analysis



Maestro Z

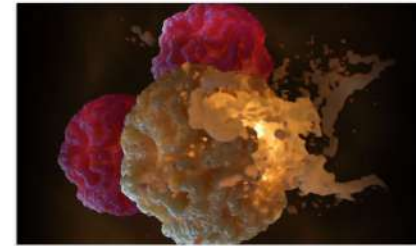
Maestro TrayZ

Maestro ZHT



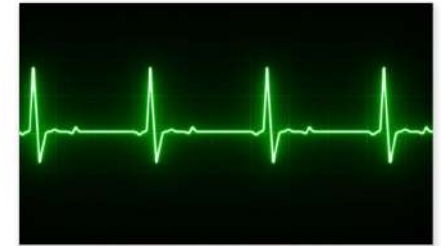
Neural Activity

Characterize neural network activity in vitro, from stem cell-derived neurodegeneration models to mini-brains



Oncology

Evaluate killing kinetics of immune cells (e.g. CAR T or NK cells), cancer cell invasion and proliferation in real time



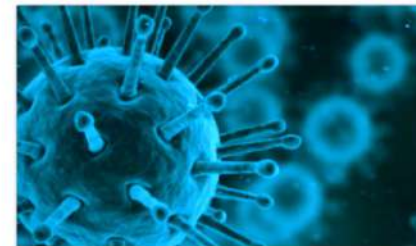
Cardiac Activity

Explore both cardiac excitability and contractility in real time, and probe cardiac development, toxicity and more



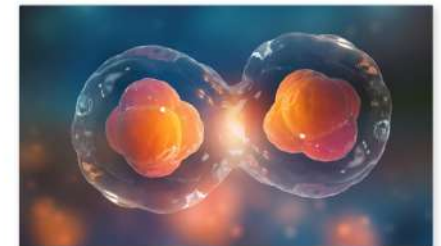
Cell-based Assays

Track real-time changes in cell migration, proliferation, viability, and cell signaling



Virology

Track cytopathic effects (CPE) in real-time for virus titer, antiviral, and neutralization assays



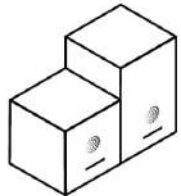
Stem Cell Culture

Study the electrical activity of other models, including: organ-on-a-chip, zebrafish, and retina



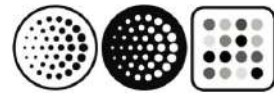
# Spot your next discovery

Antibodies and assays for understanding immune responses.



## Readers

An ELISpot, FluoroSpot, or FociSpot assay is straightforward, and to make the acquisition and analysis of the data equally effortless, we developed [Mabtech IRIS™ 2](#) and (new!) [Mabtech ASTOR™ 2](#).



## Kits

We are specialized in ELISpot and FluoroSpot – cell-based immunoassays used to quantify analyte secretion at the single-cell level. We offer both methods, as well as ELISA kits, in several formats to match different needs.



## Reagents

To complement our kits, we offer optimized peptide pools, polyclonal stimuli, buffers, substrates, plates, and antibodies as separate reagents.





## Scientific Application



## Plus Clinical Application



**01**  
**Research & Industrial**  
High School, Research Institute, Food & Drug Companies, etc.



**Chromosome Research**



**Food Industry**  
CFU in 15 mins;  
Fermentation Control;  
Process Validation;



**Environment**  
Water, Microbes



**Bio Industry**  
Strains Growth Control;  
Products Yield;  
QC and Shelf Life;



**Cell Sorting**  
Sex Control, CAR-T



**Drug Research**  
Screening Evaluation



**Personal Care**  
Particle Size  
Emulsion Quality



**Immunology**  
TBNK, Cytokine



**Agriculture**  
Breed selection  
Animal Health  
QC and Toxicology



**Stem Cells**

Cell Biology  
General Reagents

biotechne®



R&D SYSTEMS  
a biotechne brand

TOCRIS™

proteinsimple

R&D Systems™ Novus Biologicals™ Tocris Bioscience™ ProteinSimple™ ACD™ ExosomeDx™ Asuragen™ Lunaphore™

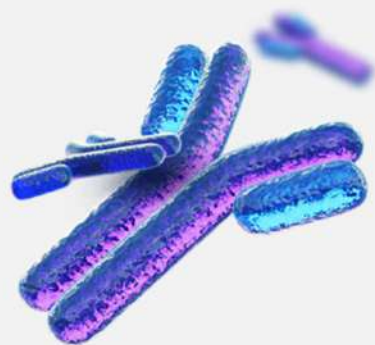
biotechne® /



Antibodies



Proteins



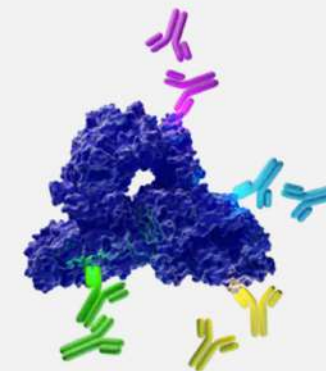
### Recombinant Antibodies

Recombinant antibodies provide an additional level of consistency and supply security to generate reproducible results.



### Simple Plex Assays

Fast and reproducible viral capsid measurement.



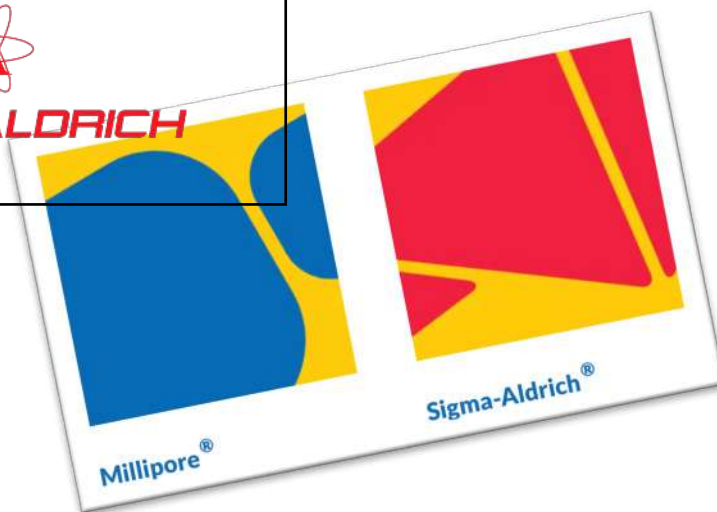
### Epitope Tag Antibodies

Our range of antibodies against the most used epitope tags makes protein detection easy.

# Wide range of reagents for cell biology



SIGMA-ALDRICH



Item No.	Item	Size
F800820	Premium Fetal Bovine Serum (Defined)	500ml
F800821	Fetal Bovine Serum (Characterized)	
F800822	Fetal Bovine Serum (Similar)	
N700100	New Born Bovine Serum (cell culture)	100ml
IVD8001	New Born Bovine Serum (Diagnostic)	50ml
D600100	Fetal Bovine Serum (Special)	
ABS001	Adult Bovine	

## FETAL BOVINE SERUM PRODUCT

PURE BLOOD TO HELP SCIENTIFIC RESEARCH



Advena: product catalogue 2026

### Biomolecular Condensate Markers

Biomolecular condensates, or membraneless organelles (MLOs), are involved in a myriad of cellular processes. MLOs are characterized by compartmentalization and concentration of proteins and nucleic acids, but unlike organelles, MLOs function across membrane surface barriers, such as transcription and translation, DNA damage response, organelle biogenesis, and signal transduction. As such, they are highly varied in composition. This provides new opportunities for deeper study. MLO proteins act as markers allowing researchers to study MLOs and their dynamics in more detail, while simultaneously enabling researchers to determine if other processes of interest function in these MLOs. At Cell Signaling Technology, our researchers are all using selected and characterized, presented here are our highly used markers for MLOs and antibodies available from Cell Signaling Technology (CST) for their study.

The infographic illustrates various biomolecular condensate markers and their functions within the nucleus and cytoplasm. Key markers include:

- SPOB/DAXX Body**: SC-35 / SPOB / SPOB2
- DNA Repair**: 53BP1 (R765) SP / Rabbit mAb #3228
- Transcription Focus (Super Enhancer)**: MYB1, MYB4 (R437) / Mouse mAb #3739
- Facultative Heterochromatin (FHC Body)**: CENP-B, CENP-B (D2F2) XP / Rabbit mAb #3481
- PML Body**: PML (R53H) / Rabbit mAb #3735
- Stress Granule**: G3BP1, G3BP1 (D2F2) XP / Rabbit mAb #3739
- Processing Body (P-Body)**: DRBP1 (D2A4) / Rabbit mAb #3209
- Nuclear Speckles**: SC-35 / SPOB / SPOB2
- Constitutive Heterochromatin**: DN1, DN1, DN1 (R181) / Rabbit mAb #3354
- DNA Replication (OCCM Complex)**: PCNA, Rad51, Fibrillarin (C1C2) / Rabbit mAb #1533
- Paraspeckles**: HNRN1, SFPQ, PIP1 (D2A8) / Rabbit mAb #3203
- Cajal Body**: Cajal (D2L3) SP / Rabbit mAb #1408
- Nuclear Pore**: NUP98 (C2A2) / Rabbit mAb #1304
- Cytoplasm**: SC-35, SPOB, PIP1 (D2A8) / Rabbit mAb #3203

www.cellsignal.com

Cell Signaling TECHNOLOGY



## Magnetic Microbeads Cell Separation Products

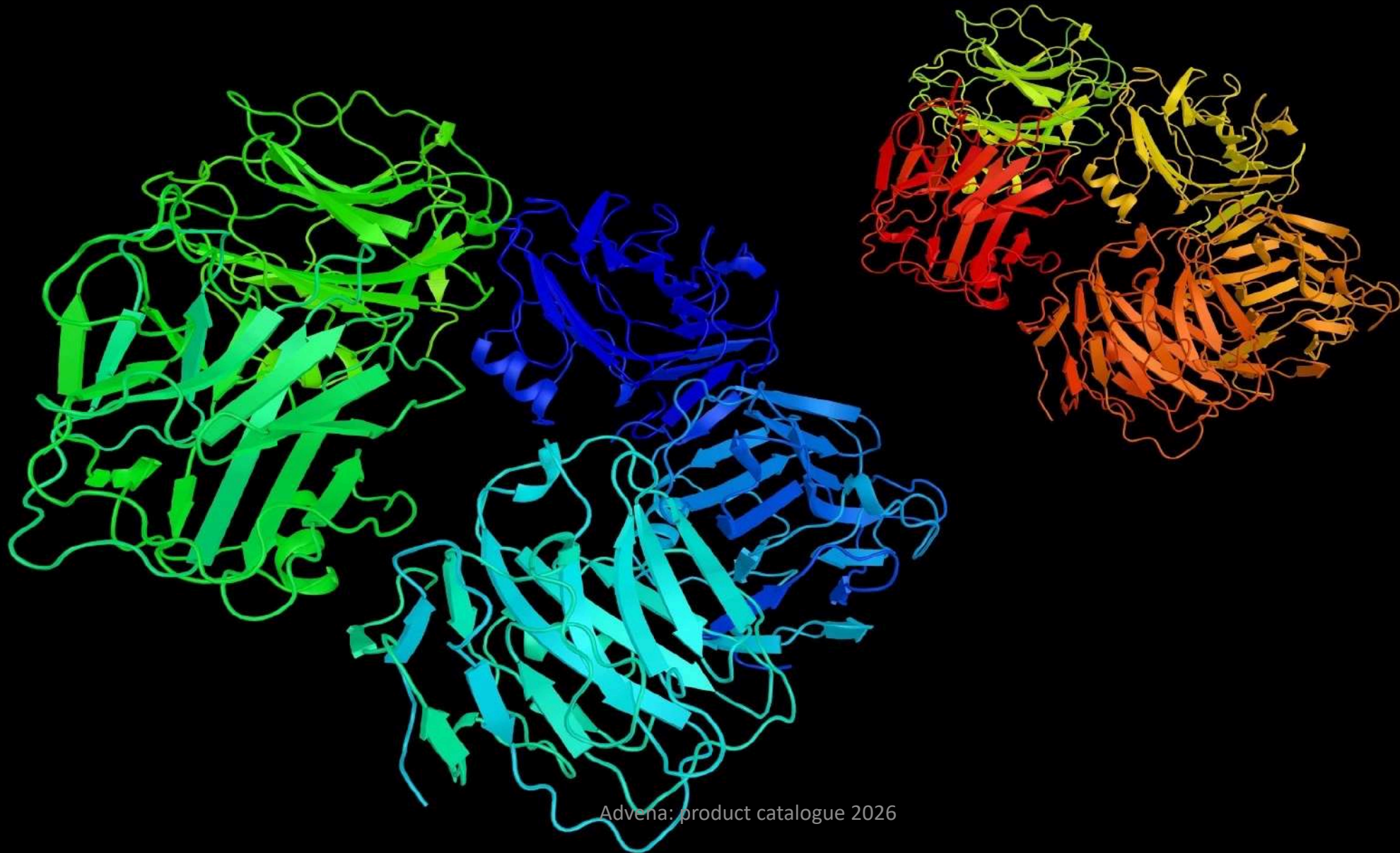
RWD Magnetic microbeads cell separation products consist of Nano-Beads Cell Separation Platform Nano-Beads-Column Based and Nano-Beads Cell Separation Platform Nano-Beads-Column free.



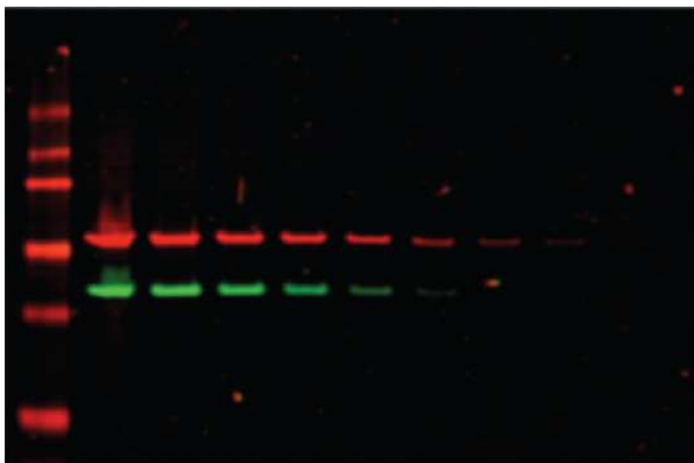
## Nano-Beads Cell Separation Platform-Column Free

RWD Nano-Bead Cell Separation Platform (Column Free), by adding biotin-antibodies to PBMC or single cell suspension to label non-target cells (negative selection), and then binding streptavidin magnetic beads to labeled non-target cells.

Protein Analysis &  
Biotechnology



# Protein Analysis & Biotechnology



Two-color fluorescent Western blots



In-Cell Western Assay imaged on an Odyssey Imager.



## Odyssey® DLx Imaging System

Get clearer answers with accurate, replicable Western blots and many other assays.



## Odyssey® M Imaging System

Empower your lab with an extensive array of applications and detection options.



## D-DiGit® Gel Scanner

Get complete nucleic acid gel imaging without the hazards.

**BETTER REAGENTS,  
BETTER RESULTS**

LICORbio's industry-leading instruments are precisely calibrated to use LICORbio reagents. So by using them, you ensure the highest quality results. And if questions arise, or an assay goes wrong, we're here to provide best-in-class support to help on your journey to discovery.

[Reagents Store](#) [Loyalty Program](#)

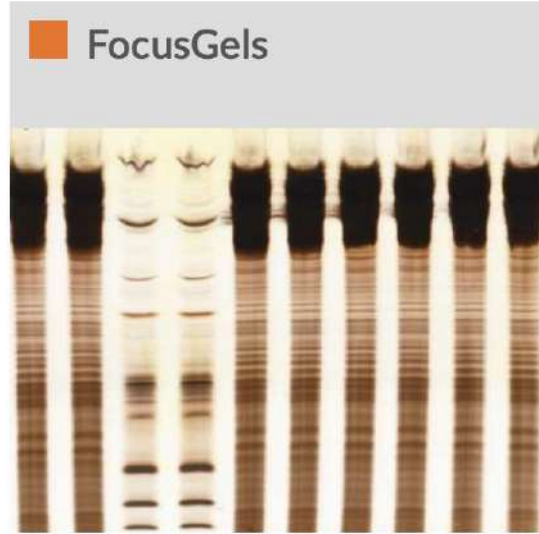


## Isoelectric Focusing

Isoelectric Focusing (IEF) can be described as an ingenious process for simultaneous concentration and separation of proteins. IEF employs a pH gradient formed by small amphoteric molecules (called ampholytes) to resolve proteins according to their different pI values (pI = isoelectric point). IEF is an end point method - when the electrophoretic run is completed proteins will appear as separate, sharp zones, in the order of their isoelectric points.

For IEF, SERVA offers a comprehensive product line:

- SERVALYT™ Carrier Ampholytes
- SERVALYT™ PRECOTES/PreNets™ Precast Gels & Kits
- FocusGels Precast Horizontal Gels
- SERVAGel™ IEF Vertical Gels
- Protein Standards
- Buffers and Accessories
- Equipment



### Protein Standards for IEF

Protein	pI
Cytochrome C	10.7
Ribonuclease A	9.5
Lectin	8.3
	8.0
	7.8
Myoglobin	7.4
	6.9
Carbonic anhydrase	6.0
β-Lactoglobulin	5.3
	5.2
Trypsin inhibitor	4.5
Glucose oxidase	4.2
Amyloglycosidase	3.5





new

**STP Protein Purification system**

MORE



**SCI Protein Purification System**

MORE



**SDA Protein Purification system**

MORE



**SCG-P Protein Purification System**

MORE



**Protein chromatography system S...**

MORE: product catalogue 2026



**TrueSynt® Oligonucleotide Synthe...**

MORE

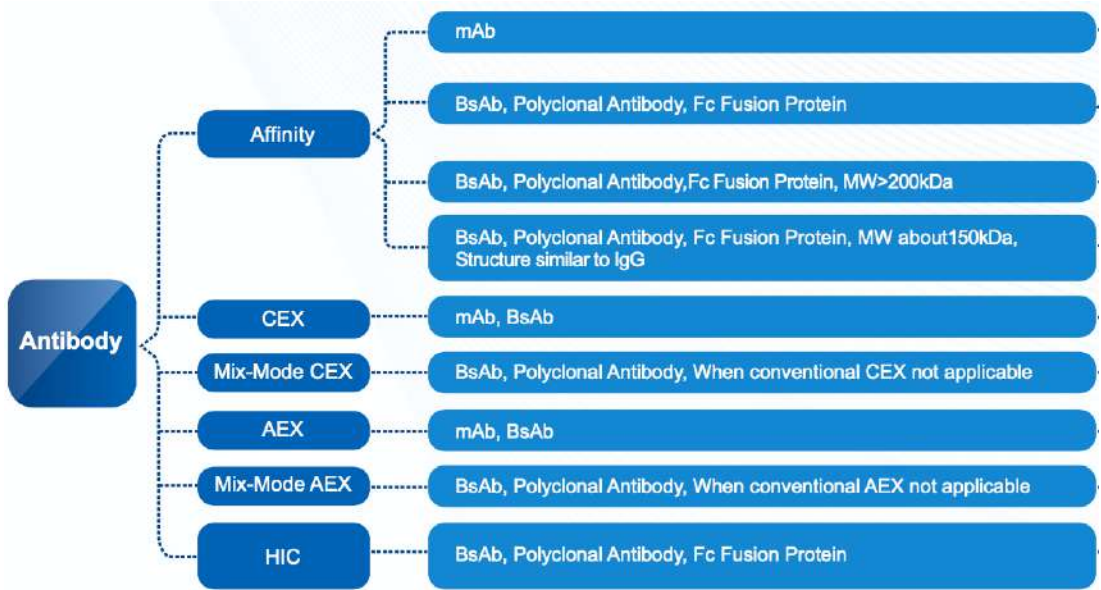


# Protein Analysis & Biotechnology

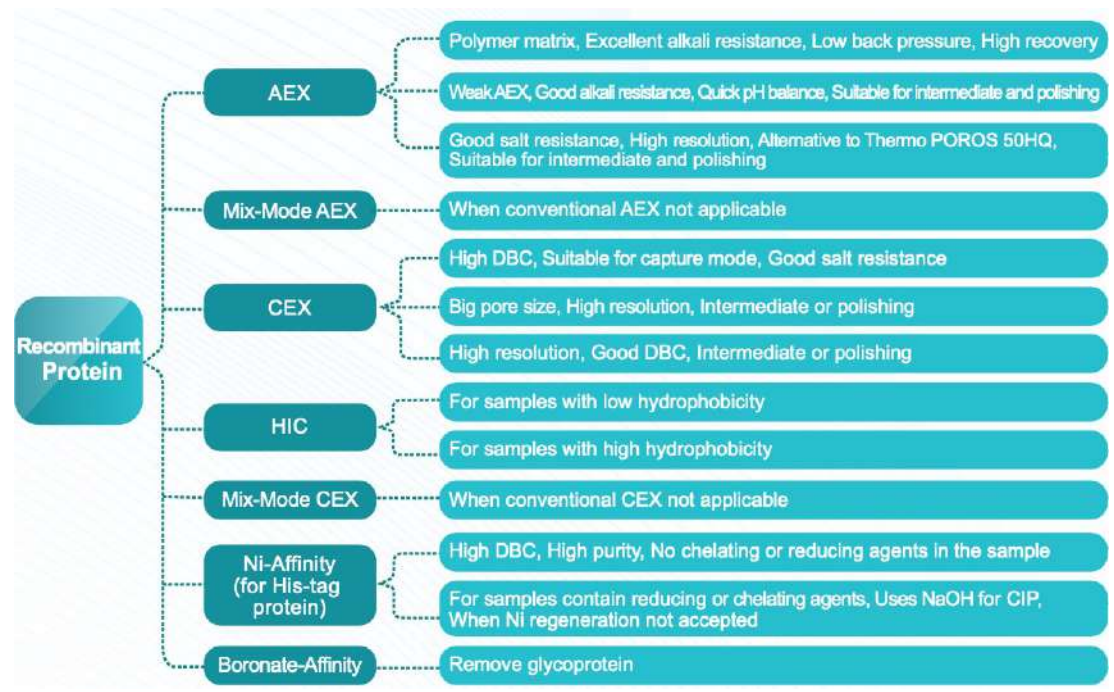


## A SPECIALIZED AND INNOVATIVE CHROMATOGRAPHY EXPERT

<p><b>Three</b> Global Locations</p>	<p>Annual Manufacturing Capacity <b>100,000L</b></p>	<p>Global Customers <b>5,000+</b></p>
<p>Patents <b>60+</b></p>	<p>Innovative Technology <b>Superior</b></p>	<p>Publication Reference <b>1000+</b></p>



<b>Insulin &amp; Peptides</b>	<b>Virus &amp; Vaccine</b>	<b>AAV Purification</b>	<b>Plasmid</b>	<b>mRNA</b>	<b>Oligo Nucleotides</b>
-------------------------------	----------------------------	-------------------------	----------------	-------------	--------------------------



Protein Analysis &  
Biotechnology



# BIO-TWINstation

**INOVATIVE CULTIVATION FERMENTOR SYSTEM**

In Touch With Life Science

Venture for  
*Tomorrow*



Registered ISO 9001:2008 Registered ISO 14001:2004

Bioprocess Engineering  
Intelligent System

Single-Use Wave Bioreactor



Parallel Control Bioreactor



Advena: product catalogue 2026

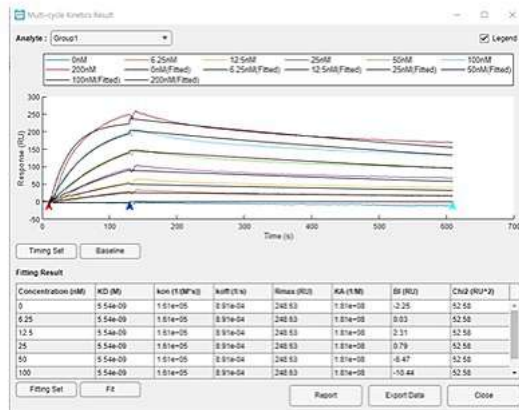
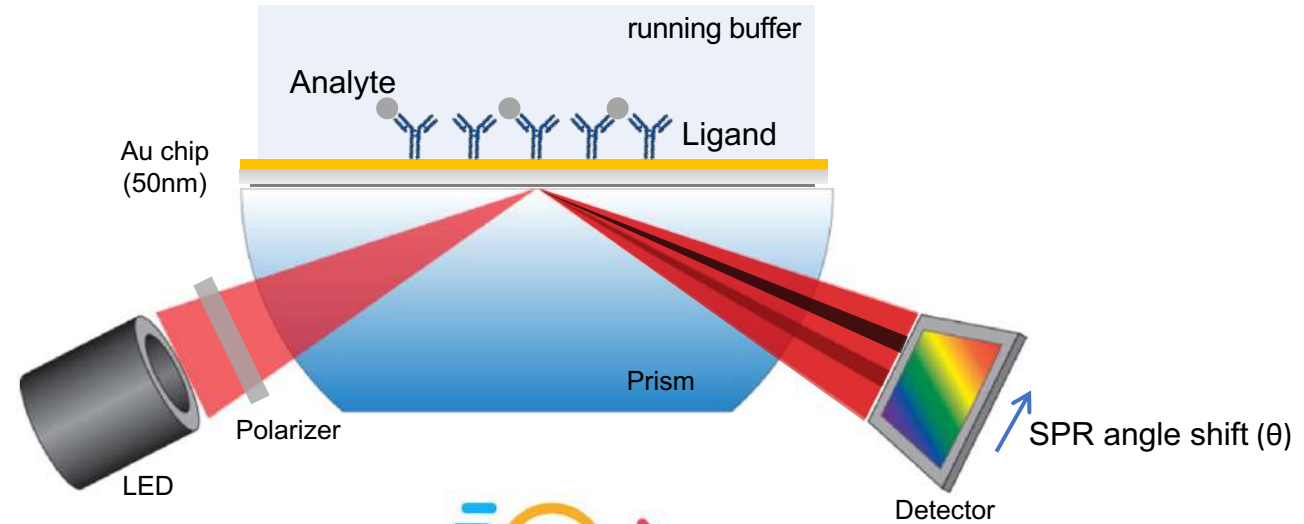


Fermentor · Bioreactor · Centrifuge  
Development and production of best quality products



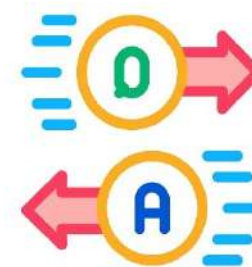
# iMSPR

Most sustainable & reasonable  
SPR System



Yes/No  
Kinetics  
Screening  
Steady state affinity  
Quantification

Protein,  
Antibody,  
Small compound,  
Nucleic acids,  
Lipid etc.



+ results editing as you want

Protein Analysis &  
Biotechnology



# Wide range of reagents for protein assays



## BETTER REAGENTS, BETTER RESULTS

LICORbio's industry-leading instruments are precisely calibrated to use LICORbio reagents. So by using them, you ensure the highest quality results. And if questions arise, or an assay goes wrong, we're here to provide best-in-class support to help on your journey to discovery.

Reagents Store

Loyalty Program



## Protein Expression & Purification

NEB offers an array of solutions for robust expression of your target protein.

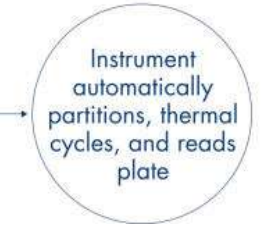
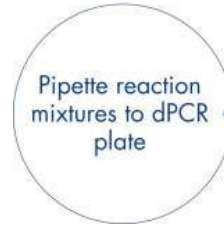
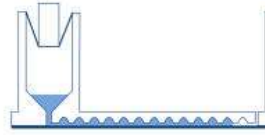
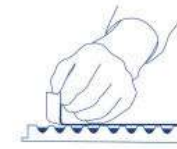


Molecular Biology



## QIAcuity Digital PCR System

For nanoplate-based digital PCR applications



- Rare mutation detection
- Copy number variation analysis
- Gene expression analysis
- Pathogen detection
- Genotyping
- miRNA research



## QIAcube Connect

For fully automated, spin-column-based nucleic acid extraction

DNA & RNA Purification

QIAcube Connect lets you automate your manual spin-column-based sample preparation kits right out of the box and purify up to 12 samples in a single run.

To work even faster, get kits specifically designed for use with QIAcube Connect. These come with spin columns and tubes already loaded onto the rotor, so you don't have to put them in yourself:

- DNeasy Blood & Tissue QIAcube Kit (240)
- DNeasy PowerSoil Pro QIAcube Kit (240)
- QIAamp DNA Blood Mini QIAcube Kit (240)
- QIAamp DNA Mini QIAcube Kit (240)
- QIAamp PowerFecal Pro DNA QIAcube Kit (240)
- QIAamp Viral RNA Mini QIAcube Kit (240)
- RNeasy Mini QIAcube Kit (240)



QIAcube Connect operates in conjunction with [QIAcube Connect Accessories](#).

For QIAcube resources, visit the [QIAcube \(classic\) resource page](#).



## Restriction Endonucleases

The leader in the discovery & production of restriction enzymes.

## DNA Modifying Enzymes & Cloning Technologies

The trusted source for DNA-modifying enzymes & cloning technologies.

## DNA Polymerases & Amplification Technologies

NEB has pursued the discovery & development of DNA polymerases for over 35 years.

## Competent Cells

NEB® has a competent cell strain for your needs.

## Markers & Ladders (DNA, RNA & Protein)

A wide range of ladders and markers to meet your macromolecule quantification needs.

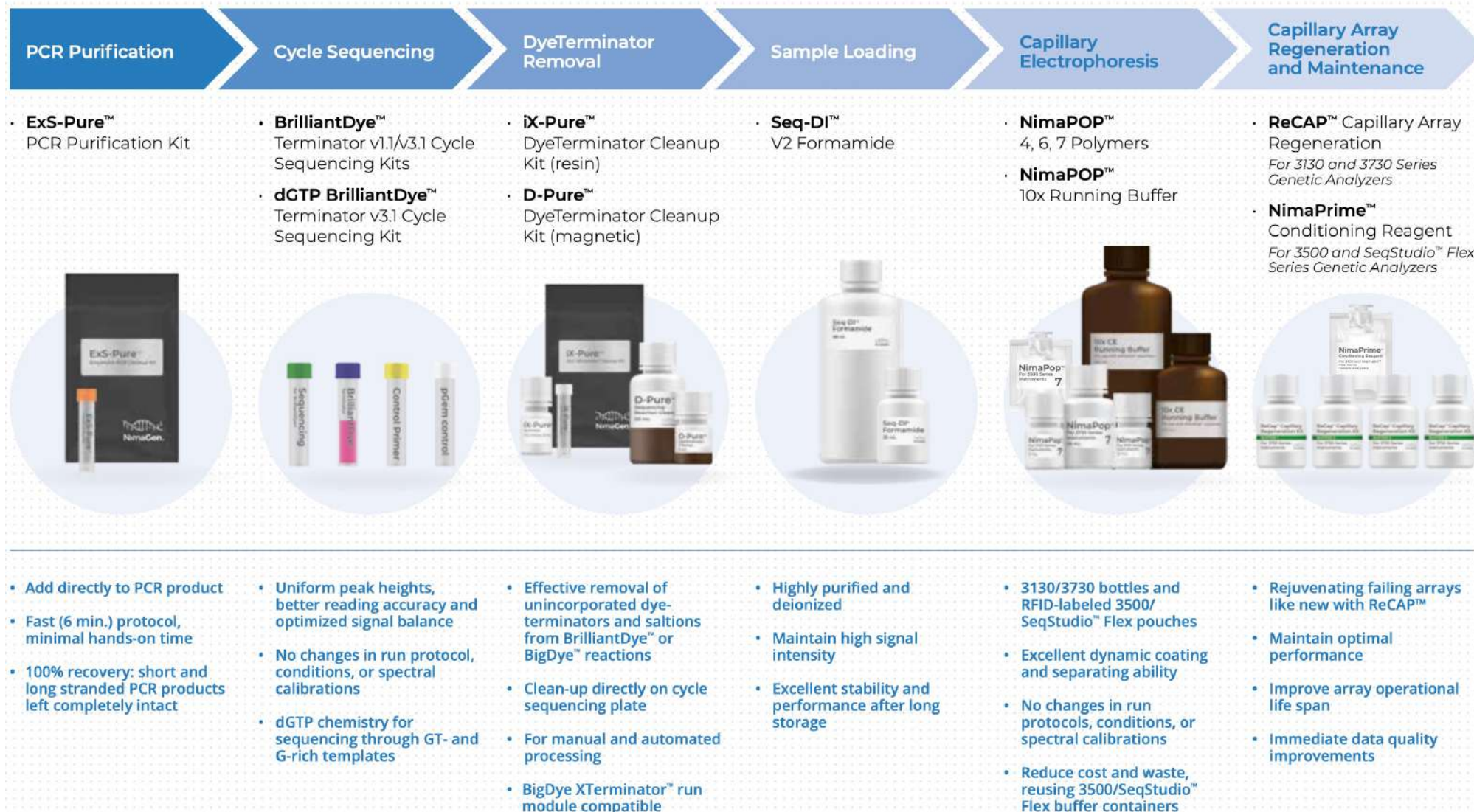


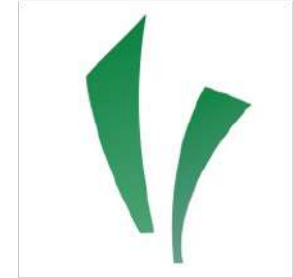
## Sanger DNA Sequencing Workflow Solutions

3130, 3730 and 3500/SeqStudio™ Flex Genetic Analyzers



Innovators in  
DNA Sequencing  
Technologies





## Turn any space into a PCR lab



 **small and light**

Carry a PCR workstation in one hand, across the lab, or across the world.

 **ready, set, go**

Time from unboxing to running a workflow: *36 seconds.*



# Software & reagents panels for NGS (any platforms compatible)



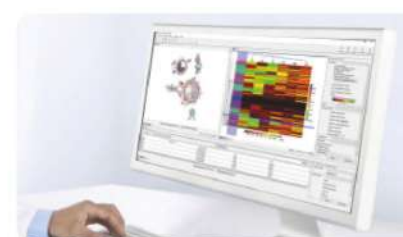
### QIAseq Targeted DNA Pro Panels

For unprecedented ease-of-use and biological insights using targeted DNA sequencing



### QIAseq Targeted DNA Panels

Digital DNA sequencing to confidently detect low-frequency variants



### QIAGEN CLC Genomics Workbench Premium

For single cell analysis, microbial profiling, pathogen typing and outbreak analysis using state-of-the-art bioinformatics



### GeneGlobe Analyze – NGS analysis credits

Analysis of RNA-seq data with pathway interpretation and convenient design of follow-up biomarker verification assays in GeneGlobe



### 16S rRNA V1-V6 and V9 for Bacterial Identification



### IDseek® Mitochondrial DNA Full Genome Sequencing by MPS Kit

Base Equipment



### Alpha

Double-beam type



[View more >](#)

### POP

Single-beam type



[View more >](#)

### NanoQ

Microvolume Spectrophotometer



[View more >](#)

### MRX A2000

Microplate Reader



[View more >](#)



## Sample Separation

Centrifuge

7 groups  
21 models

## Sample Concentration

Freeze Dryer  
Centrifugal Vacuum Concentrator  
Gas Purging Evaporator

## Sample Growing

CO<sub>2</sub> Incubator  
Lab Fermenter  
Mixer & Shaker

## Sample Storage

Deep Freezer

65 years of  
Dedication and Trust

### Sample Concentration

Freezing

-55, -110°C



**HyperCOOL Series**  
Freeze Dryers (Lyophilizer)  
3055 / 3110

Boiling

RT ~ 60 °C



**HyperVAC Series**  
Centrifugal Vacuum Concentrators  
LITE / MAX

Blowing

RT ~ 99 °C



**HyperVAP**  
Gas Purging Evaporator  
(Nitrogen Blowdown)

Group	Max. RPM	Max. capacity	
		Fixed-angle	Swing-out
Microcentrifuge	15,000	0.2 ~ 5.0mL, High speed	-
Low-speed	5,000	-	0.2 ~ 100mL, Low speed
Multi-purpose	15,000	0.2 ~ 250mL, High speed	Blood tube ~ 750mL, Low speed
Super-speed	50,000	2.0 ~ 1,000mL, High speed	-
Large-capacity	5,000	-	750mL ~ Blood bag, Low speed
Special purpose Clinical	12,000	Dedicated for single application	
Industrial	15,000	Continuous Tubular centrifuge	



**ARA**  
im-ara.com

Keep Your Valuable Samples Safe.

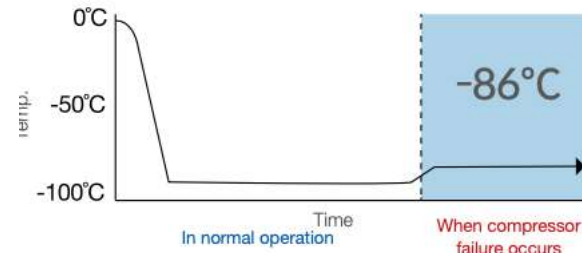
## Deep Freezer M Series

Available with a wide range of capacities

- 317 L
- 732 L
- 404 L
- 870 L
- 514 L



towards **Failure-free Freezer**



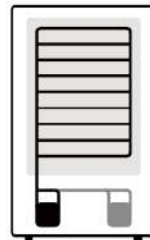
**ARA M-Series-** Dual independent compressor with special mixture of refrigerants

ARA M-series can maintain the system temperature at -80 or -86 °C \* when one of the dual compressors fails owing to the special mixture of refrigerants.



<b>Eco-Mode</b>	<b>Dual refrigeration</b>
300~500L: -86°C	300~500L: ~ -95°C
700~870L: -80°C	700~870L: ~ -90°C

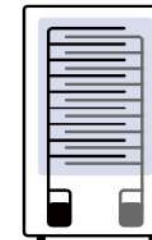
### Independent Dual Compressor System



#### Cascade refrigeration

Two compressors work together as one cooling system.

If one compressor fails, the system would be failed, resulting in immediate temperature rise.

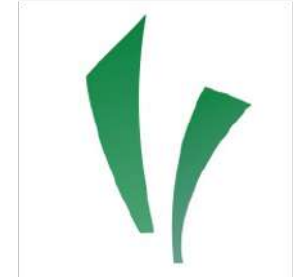


#### Dual Independent refrigeration

Two compressors work independently as two separate cooling systems.

If one compressor fails, the other can maintain the system at a certain\* temperature.

\*ARA M-series  
300~500L: -86°C  
700~870L: -80°C



## CO<sub>2</sub> Incubator Simplified

### ARA P150 / P170

Fanless CO<sub>2</sub> Incubator

Visually Simple,  
Yet Technologically Complex.

ARA P150



ARA P170



Model	ARA P150	ARA P170
Capacity	150 L	170 L
Temp. Control System	Microprocessor PID	
Temp. Range	Amb. +5~50°C	
Temp. Accuracy	±0.3°C	
Temp. Uniformity	±0.2°C	
Temp. Recovery Rate	< 10 min	
CO <sub>2</sub> Control	Dual beam NDIR	
CO <sub>2</sub> Accuracy	± 0.1% (at 5%)	
CO <sub>2</sub> Range	0~20%	
CO <sub>2</sub> Recovery Rate	< 7 min	
Humidity Range, %RH	92~98% with Water Pan	



### Minux® Rotary Microtomes

Semi and fully automated rotary microtomes guarantee the outstanding paraffin sections quality, safety in mind, ideal for routine sectioning and research application.



### Minux® Cryostats

Features superior usability with excellent safety standards for all types of frozen sectioning applications, able to cut tissues at low temperatures (as low as -35 °C).



### Single Cell Suspension Dissociator

RWD Single cell suspension dissociator uses tissue processing tubes, tissue dissociation kits, and built-in optimization programs for preparing high-activity single-cell suspension and tissue homogenate...





### Laboratory Animal Anesthesia Machines

We offer complete animal anesthesia solutions for preclinical research, which can be applied in anesthesia surgery of mice, rats, and other animals within 110kg.



### Stereotaxic Instruments

Our series of stereotaxic instruments can be used in the experiments on rats, mice, guinea pigs, cats, rabbits, dogs, monkeys, and other animals. You can easily choose the right instrument according to your needs.



### Laser Speckle Imaging System

With the advantages of its non-contact, high time and high spatial resolution, full-field rapid imaging, it provides real-time monitoring of blood flow and recording mode for preclinical research..



### MP-1000 Micropipette Puller

MP-1000 integrates stability, intelligence and humanization, making a breakthrough in the scientific instruments USA company sector. It can meet the requirements of microelectrode-related experiments and enhance user...



We don't just supply — we collaborate.

Thank you!



@ADVENA\_LSG

[info@advena-bio.com](mailto:info@advena-bio.com)

Mob./WhatsApp/Telegram: +7 705 182 11 07

Advena: product catalogue 2026



advena-bio.com